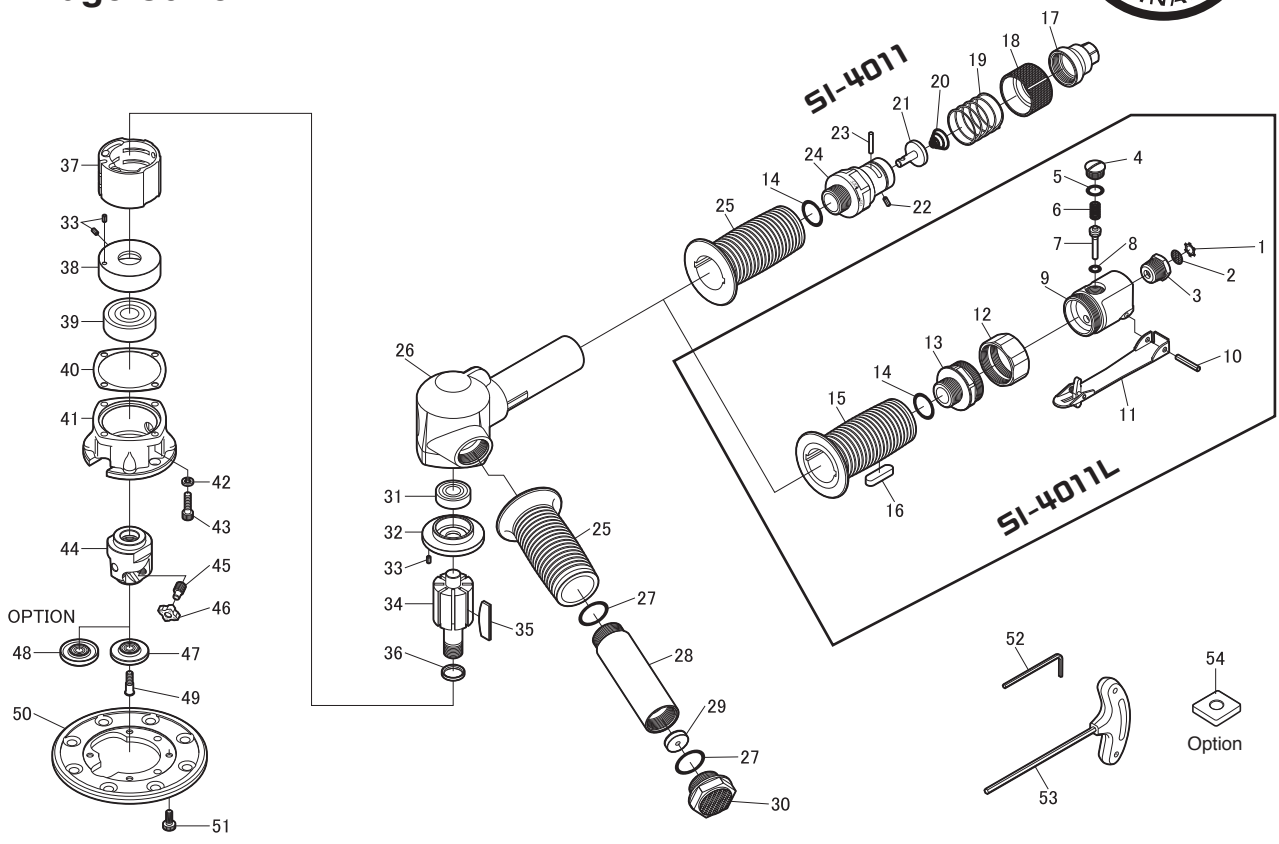


# SI-4011 SI-4011L Edge Cutter



Ref. No.	Parts No.	Description	Q'ty	Ref. No.	Parts No.	Description	Q'ty
<b>4011L</b>				<b>COMMON PARTS</b>			
1	CRTW-12	Retainer	1	25	693-21	Handle Cover	1
2	680-28A	Screen	1	26	692-1	Motor Housing incl. Heli-coil (M5-2D)	1
3	670-22	Inlet Bushing	1	27	620-28	O-Ring	2
4	230-68	Valve Screw	1	28	693-23A	Handle	1
5	P-10	O-Ring	1	29	692-11	Air Restrictor	1
6	230-4	Valve Spring	1	30	693-22A	Exhaust Bushing incl. Silencer (693-28) & Spacer (693-29)	1
7	230-6	Valve Stem	1	31	6001ZZ	Ball Bearing	1
8	P-6	O-Ring	1	32	692-3	Rear Plate	1
9	693L-4	Valve Housing incl. Bush (230-7)	1	33	30-6	Roll Pin(3Ø-6mm)	3
10	40-25	Roll Pin(4Ø-25mm)	1	34	692-2	Rotor	1
11	1110RAL-2	Safety Lever	1	35	692-8	Rotor Blade	8
12	693L-2	Lock Ring	1	36	692-10	Collar	1
13	693L-1	Valve Joint	1	37	692-7	Cylinder	1
14	991-7	O-Ring	1	38	692-4	Front Plate	1
15	693L-3	Handle Cover	1	39	6302ZZ	Ball Bearing	1
16	693L-5	Toggle Lock	1	40	692-9	Motor Gasket	1
<b>4011</b>				41	692-5	Outer Case	1
14	991-7	O-Ring	1	42	HSW-50	Washer	4
17	245-29	Inlet Bushing	1	43	Z-M50--180	Cap Screw	8
18	245-26	Valve Ring	1	44	692-6	Cutter Holder	1
19	245-27	Valve Ring Spring	1	45	693-15	Clamp Screw	3
20	380-33	Conical Spring	1	46	693-17GS	R3 Carbide Tip	3
21	245-5	Valve	1	47	693-5E	Guide Roller (for thickness ≥ 8mm)	1
22	30-8	Roll Pin(3Ø-8mm)	1	49	693-19	Screw	1
23	940-19	Valve Pin	1	50	692-30	Base Plate	1
24	693-1	Valve Housing	1	51	LVM50--120	Cap Screw	4
25	693-21	Handle Cover	1	52	WRA-3	3mm Allen Wrench	1
				53	WRA-4LB	Allen Wrench T Type	1
				★ 48	693-5	Guide Roller (for thickness ≥ 6mm)	1
				★ 54	693-39GS	C3 Carbide Tip	3