

---

# AIR OPERATED WASTE OIL CHANGER MANUAL

■ 1630300  
(AOE1030)



REV 05/11/17

---

---

 **WARNING**

Read carefully and understand all INSTRUCTIONS before operating. Failure to follow the safety rules and other basic safety precautions may result in serious personal injury.

Save these instructions in a safe place and on hand so that they can be read when required. Keep these instructions to assist in future servicing.

 **SAFETY PRECAUTIONS**

**GENERAL SAFETY RULES**

**WARNING: Read and understand all instructions.**

**WARNING: The warnings, cautions, and instructions discussed in this instruction manual cannot cover all possible conditions or situations that could occur.** It must be understood by the operator that common sense and caution are factors which cannot be built into this product, but must be supplied by the operator.

 **WARNING**

- Do not extract caustic or flammable products
- Do not expose the reservoir to any source of heat
- While extracting high temperature oils, keep hands and face protected
- Only use the device for the purpose for which it has been designed
- Do not modify any component of the equipment
- Only use original spare parts
- Our technical office is at your full disposal for any information you may need

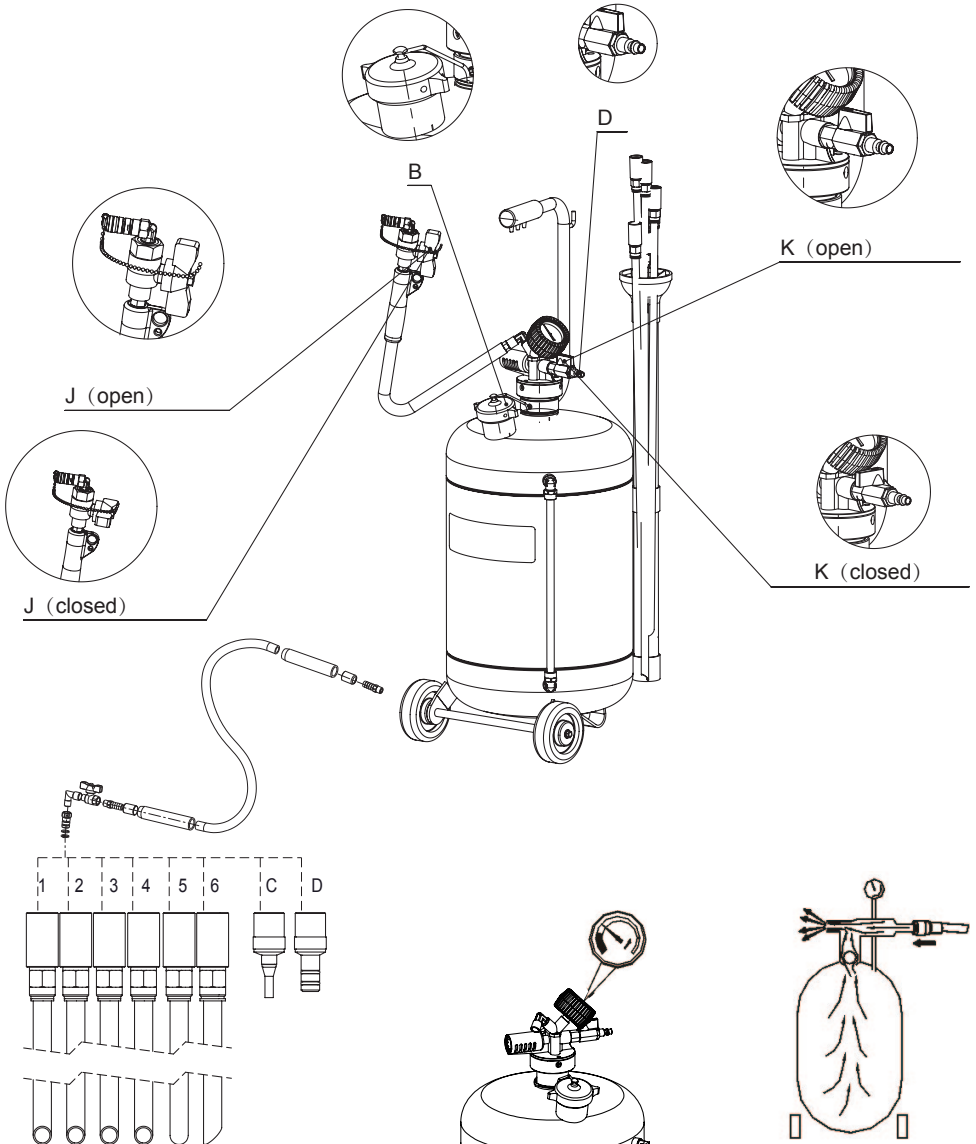
**ATTENTION**

- Some cars have a built-in oil suction probe.
- In this case, connect the coupler of the oil changer directly to the probe.
- For other makes of car (Volkswagen-BMW) equipped with a built-probe having a different opening, connector(C-Volkswagen, D-BMW) must be used.

## OPERATION

**Fig.1:** Close the suction valve (ball valve J). Hand tighten the drain cap (B).

**Fig.2:** Connect compressed air 100psi (7bar) to quick coupler (D). Open the ball valve (K). Air will flow out from the muffler . When the arrow of the vacuum gauge approaches the red field, after 70-80 seconds, close the ball valve (K), then shut-off the compressed air. The aspiration oil is now ready for use.



## OIL EXTRACTION

- Oils should always be removed when they are hot (70-80°C). The suction capacity of the unit is equal to 2/3 of its reservoir capacity.
- Insert the probe into the distick tube. Connect the probe to the unit. Open ball valve (J) taking care to keep the probe near the bottom of the sump.

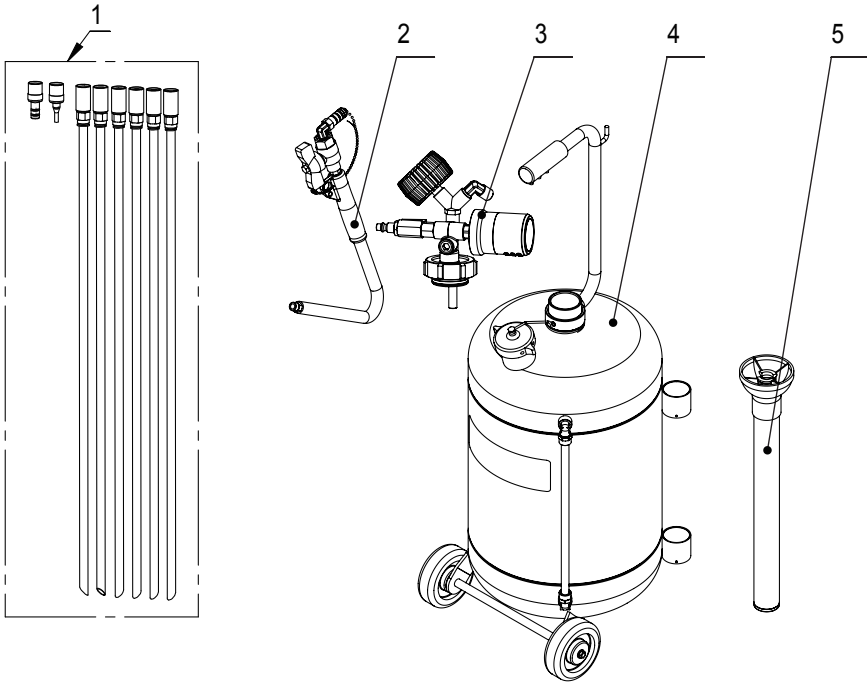
## ⚠ CAUTION

- Do not completely overturn the reservoir.
- The drained fluids should not come into contact with the oil changer's venturi valve.
- If this happens unscrew the muffler and blow it out with compressed air.

## EMPTYING THE WASTE OIL

- Remove the cap (B) and manually drain the oil.
- First open suction valve (J).

## EXPLODED & PART LIST

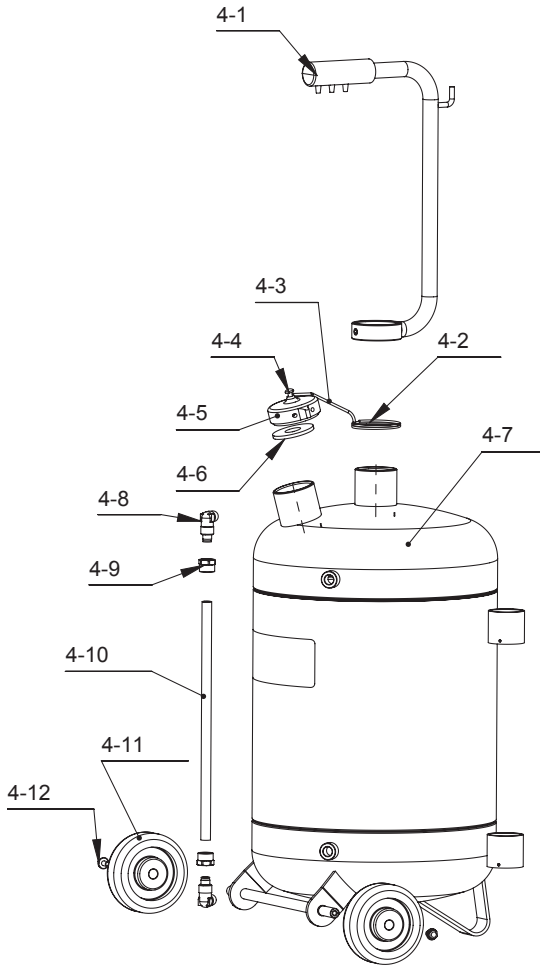


Part No.	Description	Q'ty	Part No.	Description	Q'ty
*1	Suction tube assembly	1	4	Reservoir	1
*2	Discharging hose assembly	1	5	Probes container	1
3	Vacuum assembly	1			

#: Optional accessories

\*: Wearing parts

## RESERVOIR & PART LIST

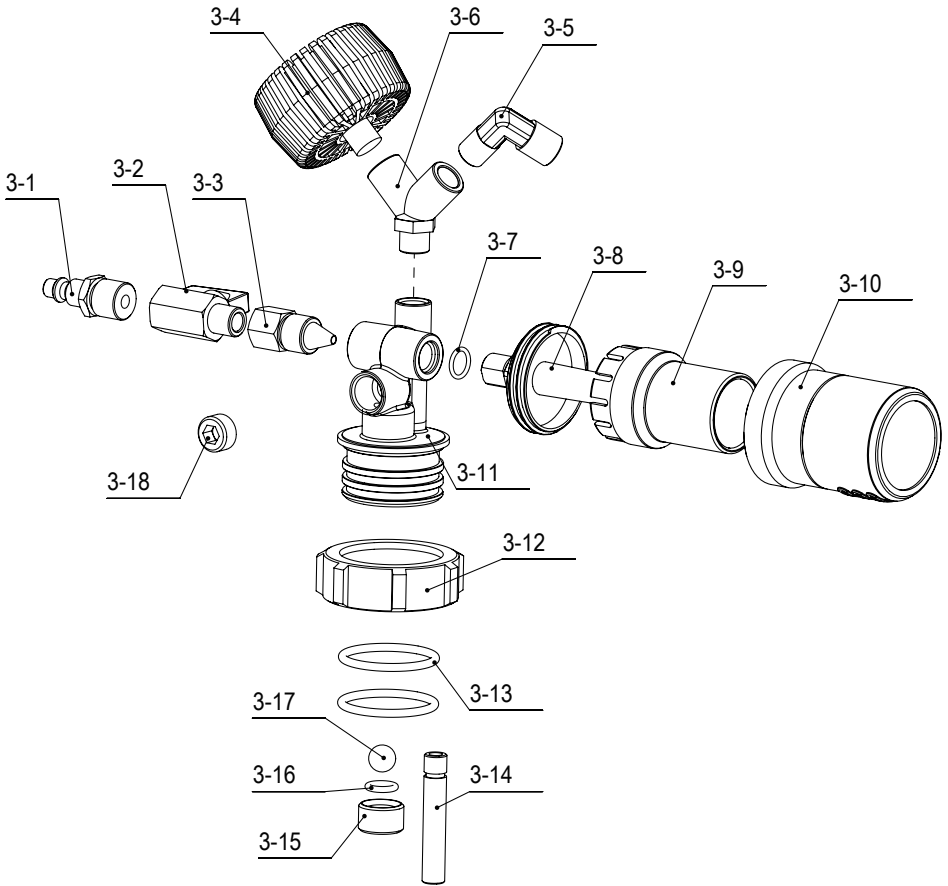


Part No.	Description	Q'ty	Part No.	Description	Q'ty
4-1	Handle	1	4-7	Reservoir	1
*4-2	Ring	1	4-8	Elbow	2
4-3	Chain	1	4-9	Nut	2
4-4	Round head screws	1	4-10	Tube with label	1
4-5	Pressure plug	1	*4-11	Wheels	2
4-6	Gasket	1	*4-12	Bolt	2

#: Optional accessories

\*: Wearing parts

## VACUUM ASSEMBLY & PART LIST



Part No.	Description	Q'ty	Part No.	Description	Q'ty
*6-1	Quick plug	1	6-10	Cover	1
*6-2	Ball valve	2	6-11	Seat	1
6-3	Muzzle	1	6-12	Nut	1
6-4	Vacuum meter	1	*6-13	O-ring	2
6-5	Elbow	1	6-14	Inlet tube	1
6-6	Y-shape adapter	1	6-15	Valve sleeve	1
*6-7	O-ring	1	6-16	O-ring	1
6-8	Muffler shaft	1	6-17	Ball	1
6-9	Middle sleeve	1	6-18	Screw	1

#: Optional accessories

\*: Wearing parts



